

Read more by scanning the QR code below



or by going to:

model-boats.com/35481



Totnes Castle 1894

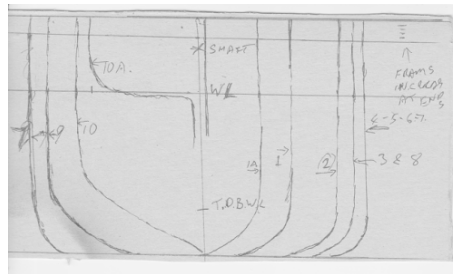
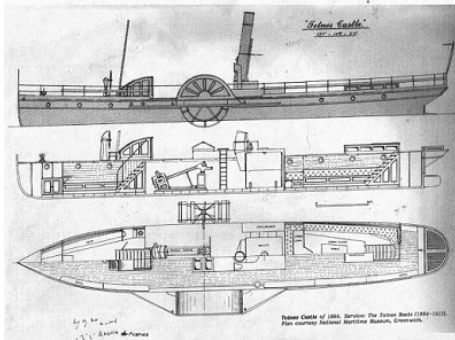
by hammer



8th Nov 2017

Totnes Castle 1894

I have posted this on another site, but will continue here if there is interest. I have a plan taken from a book some time ago. Drawn my own sections from experience, having built 2 paddlers before. T.D.B.W. on the sections is the true depth of hull. increased depth for stability, as steam plants are top heavy, experience again.



15th Nov 2017

Plating

The patient slept most of yesterday, so managed a little play. Cut and joined 3 plates, beet to shape on the padding on my stool. Cleaned the edges with sand paper & steel wool. Tinned where they join, big soldering iron is ideal. Seeing as I may have success I will now fit edging around the top to strengthen the edge of the tin. The reason for tin plate, I have a plan of the Duchess of Fife specifying this method. I was afraid to try before now.



21st Nov 2017

deck planks

I usually use coffee stirring sticks. But at this scale far to wide. I cut 3/32" strips off a 7/8" plank. Stuck them back together with a mixture of P.V.A. & acrylic black paint. Clamping over the whole length. Next day cut down the opposite way to about 1/16" & sand to a finish. Mark in the joints & nails with a pen. The planks could be any width required, & the black joints aren't to big.



5th Oct 2018

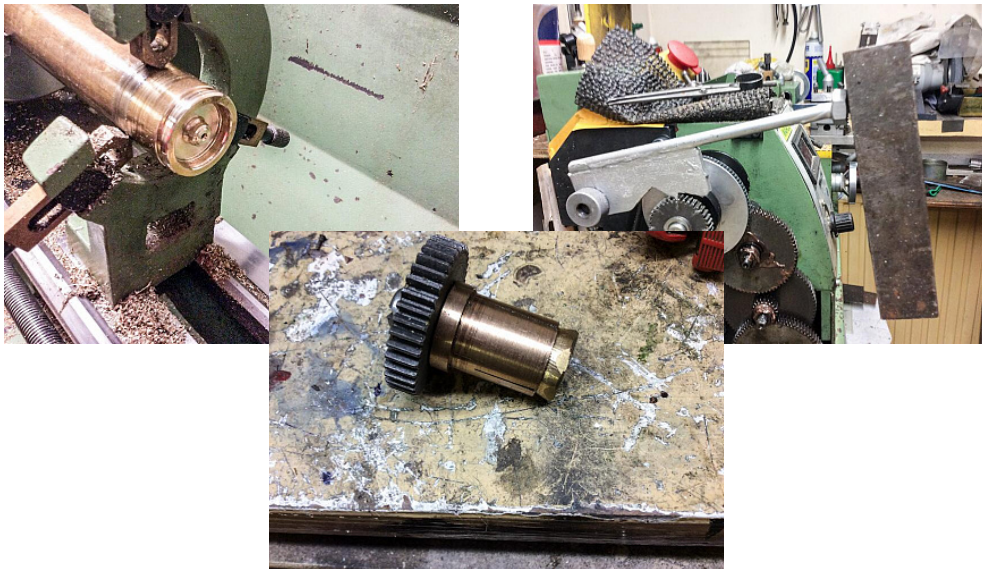
up date

No play as I have been on holiday for a month. Now I am back I need to repair six of my boats as they are all out of commission after the summer sailing. So no play on T.C. for a while. She is not abandoned. will return soon. thanks for watching.

26th Aug 2018

helm

Need a change from wood work. I don't know if the helm was wooden or brass. I do know that brass was very popular on later paddlers, so brass it is. starting with a 1ins rod I turn the end so. I mark the spokes with a pointed tool, divided by my home made arrangement. A change wheel is fixed to back end of main shaft. in this case a 40, for 8 divisions. I could do with a cross drill on the tool post, but don't have an accurate one. I will have to drill the holes in the mill.



17th Feb 2018

boiler

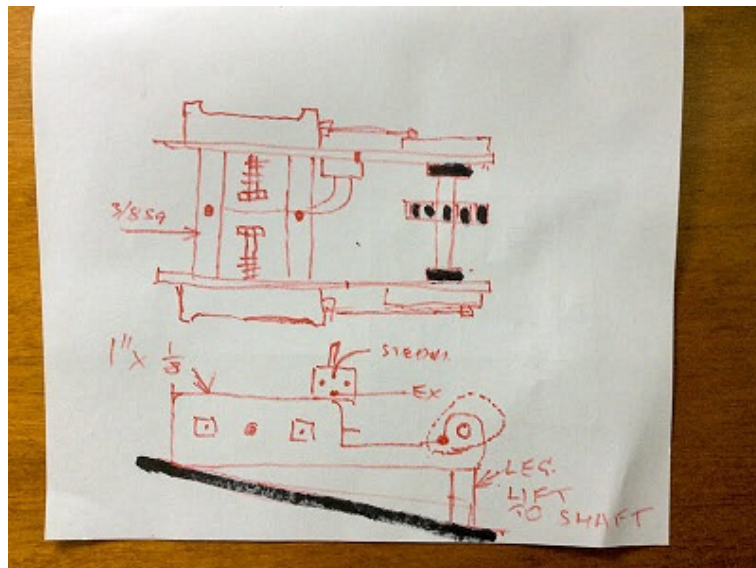
I was lucky to find a 103mm + 300mm copper tube, only £10, bargain. Scored in the lathe then cut with hacksaw. then tided up back in lathe. Fire tube brazed together with fins at the burner end. Silver solder cross tubes next. No cross tubes near boiler end, will disrupt burner. Reason for fins extra heat transfer. This will be my 7th boiler.



29th May 2018

engine

Sketched out the engine, on a scrap of paper. the main frame 1" + 1/8" two of joined by two 3/8" square. The square drilled through the centres (steam passages). Cylinders 5/8 hexagon, turned off centre to leave one flat. Also 1/8" left at each end to take six 10 BM studs for the end caps. The throttle - reverse mounted upright above to one side. Size over all 3" + 3" The drawing shows most but questions welcome. I have altered this from previous engines I have made. Split the standard so I can increase the size of the bearings. This was a weak point before, didn't wear well.



8th Jun 2018

Wheels

I thought I had posted about wheels but cant find it. so am repeating. I have cut wheel from aluminium plate in the past. This is a waste & a tedious job. This time I am building them up with strip & rod. Wooden formers turned up for inner & outer rims. Strip rapped around & Joint soldered. then holes drilled for the spokes. A hub tuned & drilled, the accurate holes have aligned every thing in the right position. One ready for soldering. inner wheel almost flat. Outer dished to stop lateral movement. Spokes marked in red from board for bends.

